

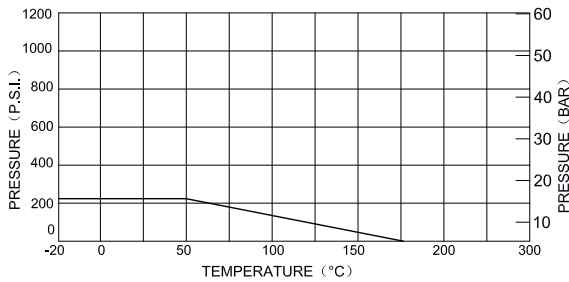
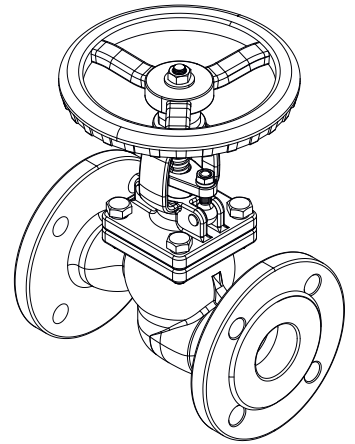
**DESCRIPTION:** Straight type, AISI 316 equivalent body, metal seated screw down stop valve with rising stem, bolted bonnet. Raised face flanged.

**APPLICATION:** Start/stop and throttling of: Water, steam, oils, etc.

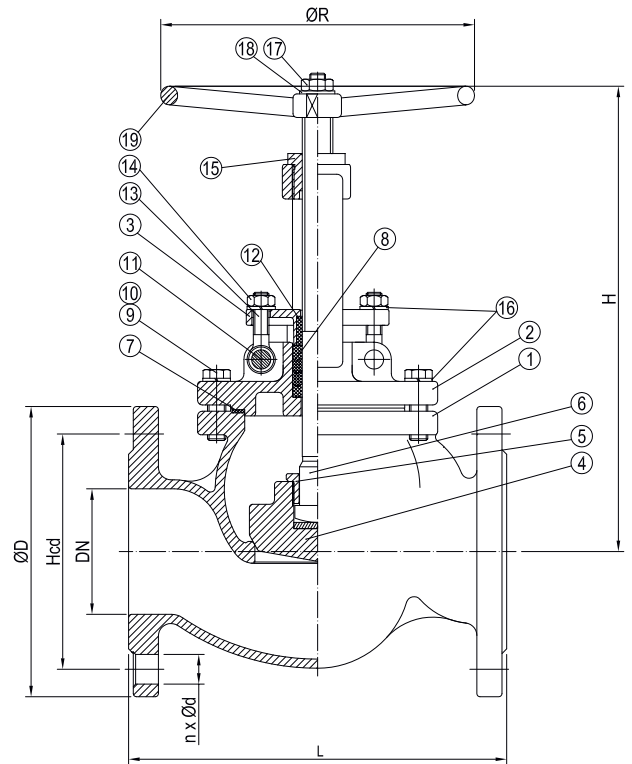
**STANDARD & DESIGN:**

Design Code: ASME B16.34  
 Inspection Std.: EN 12266-1  
 End Std.: DIN 2633  
 Face to Face Std.: DIN 3202-F1  
 Flanges drilled: PN16 (DN15-DN200)  
 Pressure rating: PN16 (DN15-DN200)

**VARIATIONS:** Can be supplied with regulating disc and non return disc. PTFE soft seal available.



No	Part	Material	Code
1	Body	Stainless Steel	1.4408
2	Bonnet	Stainless Steel	1.4408
3	Gland	Stainless Steel	1.4308
4	Disc	Stainless Steel	1.4408
5	Disc Cover	Stainless Steel	1.4408
6	Stem	Stainless Steel	SUS 316
7	Gasket	PTFE/304+GRAPHITE	-
8	Gland Packing	PTFE	-
9	Bolt	Stainless Steel	SUS 304
10	Nut	Stainless Steel	SUS 304
11	Hinge Pin	Stainless Steel	SUS 304
12	Stem Bushing	PTFE	-
13	Eye Bolt	Stainless Steel	SUS 304
14	Gland Nut	Stainless Steel	SUS 304
15	Yoke Sleeve	Bronze	CuSn5ZnPb5-C
16	Spring Washers	Stainless Steel	SUS 304
17	Nut	Stainless Steel	SUS 304
18	Name Plate	Stainless Steel	SUS 304
19	Hand Wheel	Cast Iron	FCD 400



DN	n x ød	Hcd	øD	L	H	øR	Kg
15	4x14	65	95	130	186	140	3.3
20	4x14	75	105	150	186	140	4.3
25	4x14	85	115	160	212	140	5.2
32	4x18	100	140	180	243	160	7.7
40	4x18	110	150	200	246	160	8.5
50	4x18	125	165	230	252	200	12.2
65	4x18	145	185	290	308	200	16.3
80	8x18	160	200	310	327	250	21.3
100	8x18	180	220	350	384	250	28.2
125	8x18	210	250	400	484	300	46.6
150	8x22	240	285	480	547	350	60.8
200	12x22	295	340	600	669	350	98.5