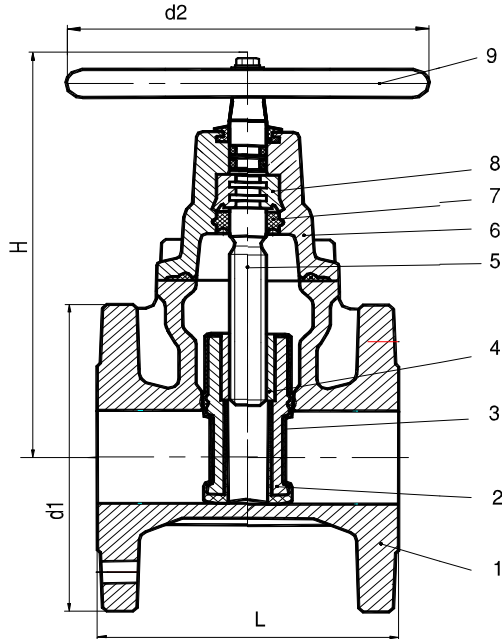


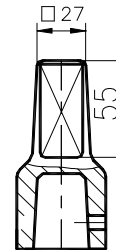
**PRODUS AVIZAT SANITAR
SANITARY APPROVED**



POZ ITEM	REPER PART NAME	MATERIAL / MATERIAL		
		TIP TYPE	SIMBOL SYMBOL	
1	Corp / Body	PN10	fonta cenusie	EN-GJL-250
		PN16	fonta nodulara	EN-GJS-500-7
2	Sertar / Wedge	fonta nodulara ductile iron		EN-GJS-500-7
3	Manta sertar Wedge coating	cauciuc / rubber		NBR sau EPDM NBR or EPDM
4	Piulita sertar Wedge nut	bronz / bronze		CuSn5Zn5Pb5
5	Tija / Stem	inox min.11.5%Cr min.11.5%Cr stainless steel		-
6	Capac / Bonnet	PN10	fonta cenusie cast iron	EN-GJL-250
		PN16	fonta nodulara ductile iron	
7	Inel de etansare Sealing ring	cauciuc / rubber		NBR sau EPDM NBR or EPDM
8	Inel de reazem Bearing ring	bronz / bronze		CuSn5Zn5Pb5
9	Roata de manevra Handwheel	fonta cenusie / cast iron		EN-GJL-250
		aluminiu / aluminium		-
		otel carbon / carbon steel		-
	Garnituri / Gaskets	cauciuc / rubber		NBR sau EPDM NBR or EPDM
	Organe de asamblare Bolting	otel inox / stainless steel		-

CARACTERISTICI CONSTRUCTIVE / DESIGN CHARACTERISTICS :

- constructie / design : - ISO 5996; DIN 3352/4
- lungime de constructie / overall length : - EN 558-1,ISO 5752 – S14, S15
- flanse de legatura / connecting flanges : - PN 10; PN16 EN 1092-2, ISO 7005 - 2; DIN 2501
- viteza maxima de curgere pentru lichide / max. flow speed for liquids
: - 3 m/s pentru / for PN 10
: - 4 m/s pentru / for PN 16



Varianta cu cap de antrenare
Driving head variant

**TEMPERATURA MAXIMA / TEMPERATURA MINIMA DE LUCRU - TS /
MAX. / MIN. WORKING TEMPERATURE – TS:**

- 80°C / -10°C - cauciuc NBR / NBR rubber
- 120°C / -10°C - cauciuc EPDM / EPDM rubber

(dimensiuni in mm / dimensions in mm)

DN	L		H	d1	d2	Nr. rot./ cursa Rot./ stroke	Moment de actionare la roata Handwheel torque (daN)	Masa neta / Net weight ≈ (kg)				ξ
	S14	S15						robinet cu ax liber free shaft valve		roata de manevra handwheel	cap de antrenare driving head	
								S14	S15			
50	150	250	225	165	200	10	2	12.7	14	0.5	1.1	0.13
65	170	270	267	185	250	13	3	18.6	19.8	0.87	1.5	0.12
80	180	280	275	200		16		19.6	20.4			
100	190	300	315	220	315	20	4	25	27	5		0.11

ξ - coeficient de pierdere de sarcina / head loss factor

Pentru confirmare va rugam folositi fisa tehnica contractuala / For confirmation, please use the technical sheet of agreement FTC1