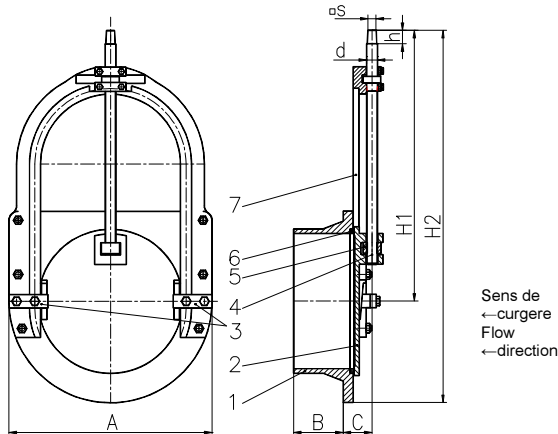
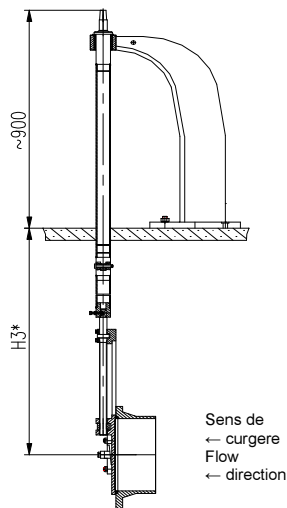


VANA STAVILAR CU AX LIBER
SLUICE VALVE WITH FREE SHAFT



| POZ. ITEM | REPER PART NAME | MATERIAL / MATERIAL | |
|-----------|-----------------------------|--|---------------|
| | | TIP TYPE | SIMBOL SYMBOL |
| 1 | Corp / Body | fonta cenusie / cast iron | EN-GJL-250 |
| 2 | Disc inchidere Closing disc | fonta cenusie / cast iron | EN-GJL-250 |
| 3 | Bacuri / Clamp | otel carbon / carbon steel | - |
| 4 | Tija / Stem | inox min.11,5%Cr min.11,5%Cr stainless steel | - |
| 5 | Piulita / Nut | aliaj Cu / copper alloy | - |
| 6 | Inel etansare Sealing ring | aliaj Cu / copper alloy | - |
| 7 | Consola Bracket | fonta cenusie / cast iron | EN-GJL-250 |
| | Organe de asamblare Bolting | otel carbon / carbon steel | - |

VANA STAVILAR CU COLOANA SI STALP DE MANEVRA
SLUICE VALVE WITH COLUMN AND PILLAR



CARACTERISTICI CONSTRUCTIVE / DESIGN CHARACTERISTICS:

- constructie / design - cu tija neascendenta / with non rising stem
- fixare in zidarie / mounting into the wall - cu tronson cilindric / with cylindric pipe section
- actionare / operation - cu tija libera / with free stem
 - cu accesorii / with accesories: - roata de manevra / handwheel ;
 - coloana si stalp de manevra / column and pillar
- adancimea maxima de imersie / max. immersion depth - 5m la varianta cu coloana / 5m for variant with column;
- tipul etansarii / sealling type - aliaj de Cu / fonta / copper alloy / cast iron
 - aliaj de Cu/ aliaj de Cu / copper alloy / copper alloy

TEMPERATURA MAXIMA DE LUCRU 60°C / MAX. WORKING TEMPERATURE 60°C

UTILIZARI PRINCIPALE / MAIN APPLICATION :

- in instalatii de epurare si tratare a apelor, baraje, rezervoare, bazine, canale / in water treating plants, dams, tanks, basins, water troughs.

MEDIUL DE LUCRU / WORKING FLUID :

- apa cu continut de suspensii solide de max.10.000mg/l sau alte lichide necorozive fata de materiale in contact cu mediu circulant / water with max.10.000mg/l solid particles content or other noncorrosive fluids to the materials contacting

(dimensiuni in mm / dimensions in mm)

| DN | A | B | C | H1 | H2 | d | h | s | Numar (rot/cursa) Rotations no./stroke | Mom. actionare Torque daNm | Pierderi Leakage cm ³ /min | Masa neta Net weight =(Kg.) | Varianta cu coloana si stalp de manevra / Variant with column and pillar | |
|-----|-----|-----|----|-----|-----|----|----|----|--|----------------------------|---------------------------------------|-----------------------------|--|-----------------------|
| | | | | | | | | | | | | | H3* | Greutate Weight =(Kg) |
| 150 | 300 | 92 | 54 | 370 | 520 | 20 | 26 | 14 | 38 | 4 | 12 | 24 | 3600 | 64 |
| 200 | 350 | | 60 | 460 | 635 | | | | 50 | 5,2 | 25 | 33 | 1700 | 73 |
| 250 | 400 | 100 | 60 | 535 | 735 | 24 | 30 | 17 | 6,5 | 75 | 44 | 3200 | 87 | |
| 300 | 450 | 110 | 65 | 600 | 825 | | | | 6,5 | 100 | 50,5 | 4000 | 98 | |

H3* - cote standard. La cererea beneficiarului se pot asigura si alte valori / standard dimensions. On request can be offered others values.

Pentru confirmare va rugam folositi fisa tehnica contractuala / For confirmation please use the technical sheets of agreement FTC12